



A LEGACY / MEMORIAL / REFLECTION PARK

From the Trustees...

The Legacy / Memorial / Reflection Park project seeks to provide current and future generations of Masons the opportunity to provide for a legacy of their own through a physical and enduring structure that further builds on previous generations' charitable giving. This project will therefore be advanced by future Legacy gifts.

MAINE MASONIC CHARITABLE FOUNDATION
A LEGACY / MEMORIAL / REFLECTION PARK

HONORING THE...

PAST

PRESENT

FUTURE

A CELEBRATION OF FREEMASONRY IN MAINE - OVER TWO
CENTURIES OF GOOD MEN WORKING TO BE BETTER MEN.

THIS LEGACY PARK OFFERS A PLACE TO HONOR AND REMEMBER
MASONS AND FAMILY MEMBERS THAT HAVE HELPED GUIDE MASONS
IN THEIR LIFE'S JOURNEY

MAINE MASONIC CHARITABLE FOUNDATION
A LEGACY / MEMORIAL / REFLECTION PARK

THE TRUSTEES APPROVED PROCEEDING WITH A PLAN TO EXPLORE
CONSTRUCTING A STRUCTURE ON THE FOUNDATION'S PROPERTY IN
HOLDEN, MAINE

A CENTRAL LOCATION FOR MAINE MASONS AND A WELL TRAVELED
ROAD FOR VISITORS

63% OF MAINE MASONS LIVE WITHIN 2 HOURS OF HOLDEN

THE TRUSTEES APPROVED PROCEEDING **ONLY** IF ALL FUNDING FOR THE PROJECT
CAME FROM NEW FUNDS RAISED BY THE FOUNDATION

**MAINE MASONIC CHARITABLE FOUNDATION
A LEGACY / MEMORIAL / REFLECTION PARK**

THE PLANS AND DESIGN ARE NOT FINAL

IT IS A WORK IN PROGRESS

YOU ALL HAVE AN OPPORTUNITY TO HELP MAKE IT WHAT YOU WANT IT TO BE

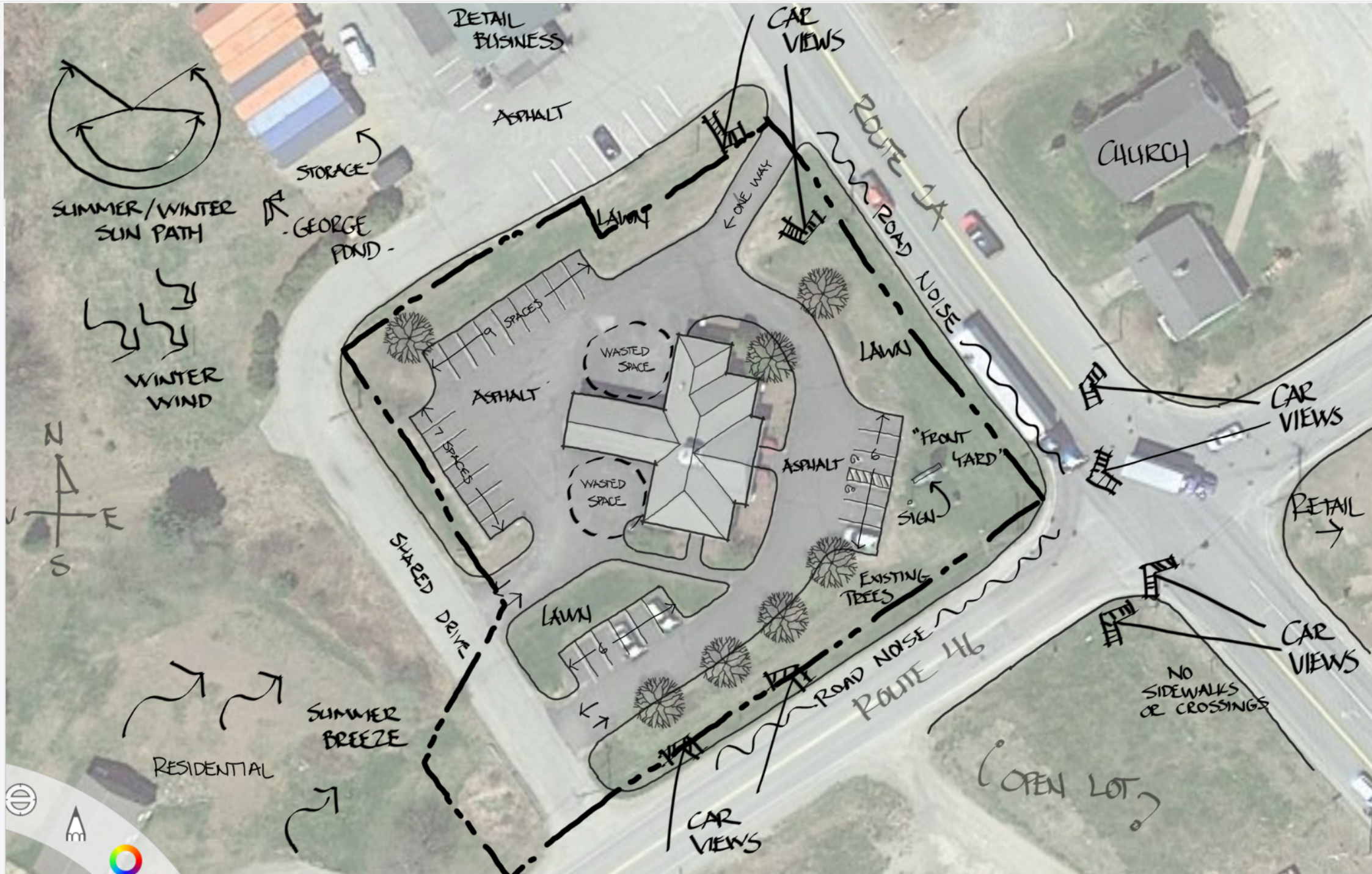
SHARE YOUR THOUGHTS AND COMMENTS WITH THE EXECUTIVE DIRECTOR

SEND AN EMAIL DIRECTOR@MAINEMCF.ORG

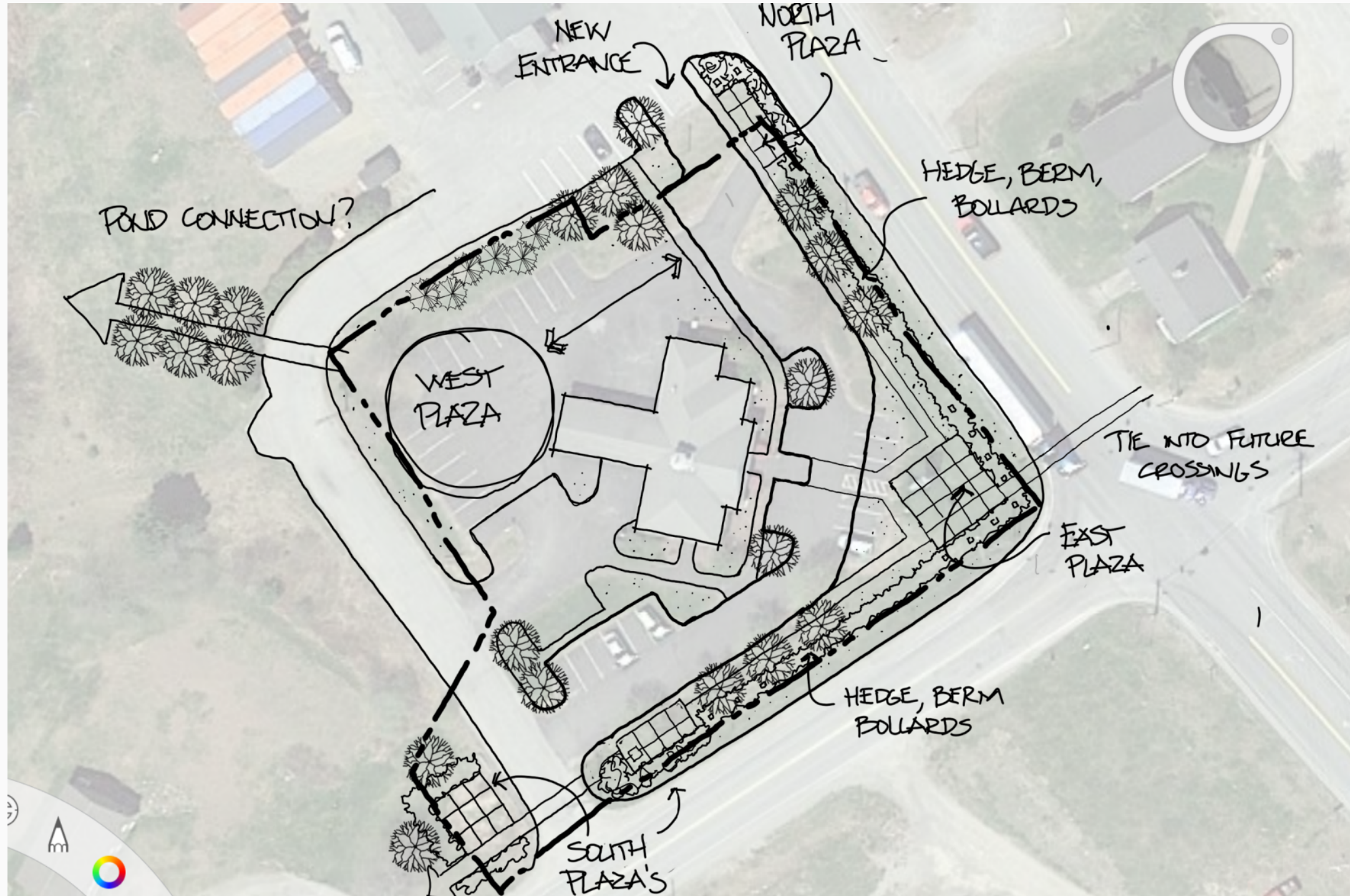
TAKE A LOOK AT THE NEXT FEW PAGES FOR SOME OF THE DESIGN IDEAS BEING

CONSIDERED

A ROUGH SKETCH OF THINGS TO CONSIDER...PROPERTY LINES, BUILDING ORIENTATION, ROAD FRONTAGE...

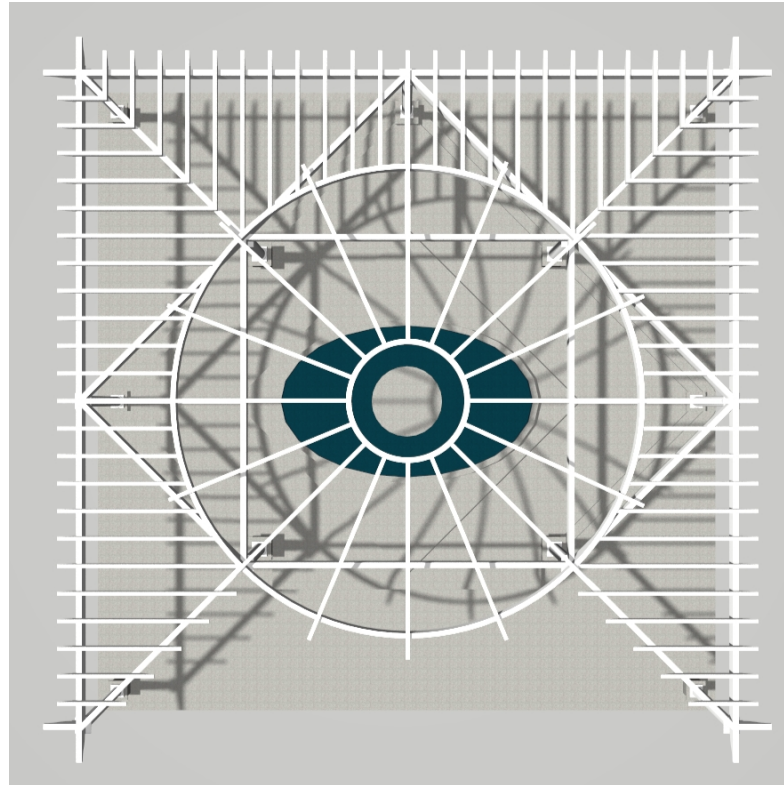


A ROUGH SKETCH OF THE START OF A DESIGN / CONCEPT...



MAINE MASONIC CHARITABLE FOUNDATION
A LEGACY / MEMORIAL / REFLECTION PARK

ONE POTENTIAL DESIGN FOR THE LAYOUT FOR WHAT IS LABELED THE
"WEST PLAZA" ON THE PREVIOUS SLIDE



Designed by a Mason to include some subtle and not so subtle layers of Masonic Symbolism

MAINE MASONIC CHARITABLE FOUNDATION

A LEGACY / MEMORIAL / REFLECTION PARK

PARTICIPATION OPTIONS

- Ground level basic pavers (1 sq ft granite paver) **9 HAVE BEEN SOLD** \$2,500
- Larger granite pieces \$7,500 to \$15,000
- Pond/Reservoir/Lighting \$100,000 to \$200,000
- Standing granite pieces (markers & pedestals) \$50,000 to \$75,000
- Naming rights \$250,000 to \$600,000
- Trees \$7,500
- Benches **ONE HAS BEEN SOLD** \$7,500 to \$10,000

MAINE MASONIC CHARITABLE FOUNDATION
A LEGACY / MEMORIAL / REFLECTION PARK

FAQs

1. Who will this be open to?
 - Lodges, Masonic appendant bodies, individual Masons and their families
 - We want to share the plan with everyone (all Masons in Maine) to give equal opportunity to all for the unique opportunities available
2. How long will construction take (once fully funded)?
 - From start to finish six (6) months
3. Is the intention that this "park" will be open year-round to visitors?
 - Not fully determined at this time, the plan would be for it to be open in mid-to-late April and close late October. No plans to shovel or remove snow to allow access (due in part to potential liability and annual maintenance cost concerns)
4. Who do you contact to learn more?
 - The Executive Director (Susan Scacchi)
director@mainemcf.org or (603) 677-2436